

DREDGING NOTICE  
U.S. ARMY CORPS OF ENGINEERS  
ST. PAUL DISTRICT

NOTICE DATE: August 13 <sup>th</sup> , 2019	DREDGING CATEGORY: Imminent
MEETING DATE: If requested	MEETING TIME:
BOAT REQUIREMENT:	MEETING LOCATION:
DREDGE CUT NAME: Lansing Upper Light	RIVER MILE: 664.1 – 664.7

**HISTORIC DATA**

Frequency: 73%	Avg. Quantity/Job: 44,224 yd <sup>3</sup>
Date Last Dredged: Aug. 18 <sup>th</sup> , 2018	Avg. Quantity/Year: 32,491 yd <sup>3</sup>

**SURVEY DATA**

Date Surveyed: August 8<sup>th</sup>, 2019  
Water Surface Elevation: 621.2  
Low Control Pool Elevation: 619.3  
Net Difference: +1.9  
5 Day River Forecast: Slow Decline

**DREDGING DATA**

Recommended Channel Width: 500 feet  
Recommended Dredging Depth: 11 feet  
Estimated Quantity: 26,966 yd<sup>3</sup>  
Type of Dredge: Government Hydraulic  
Proposed Dredging Date: August 15<sup>th</sup>, 2018  
Estimated Duration: 4 Dredging days  
Justification for Dredging: The navigation channel is reduced to 150 feet between the 9' contours and closed between the 10.5' contours. On a recommended bend width of 500 feet.

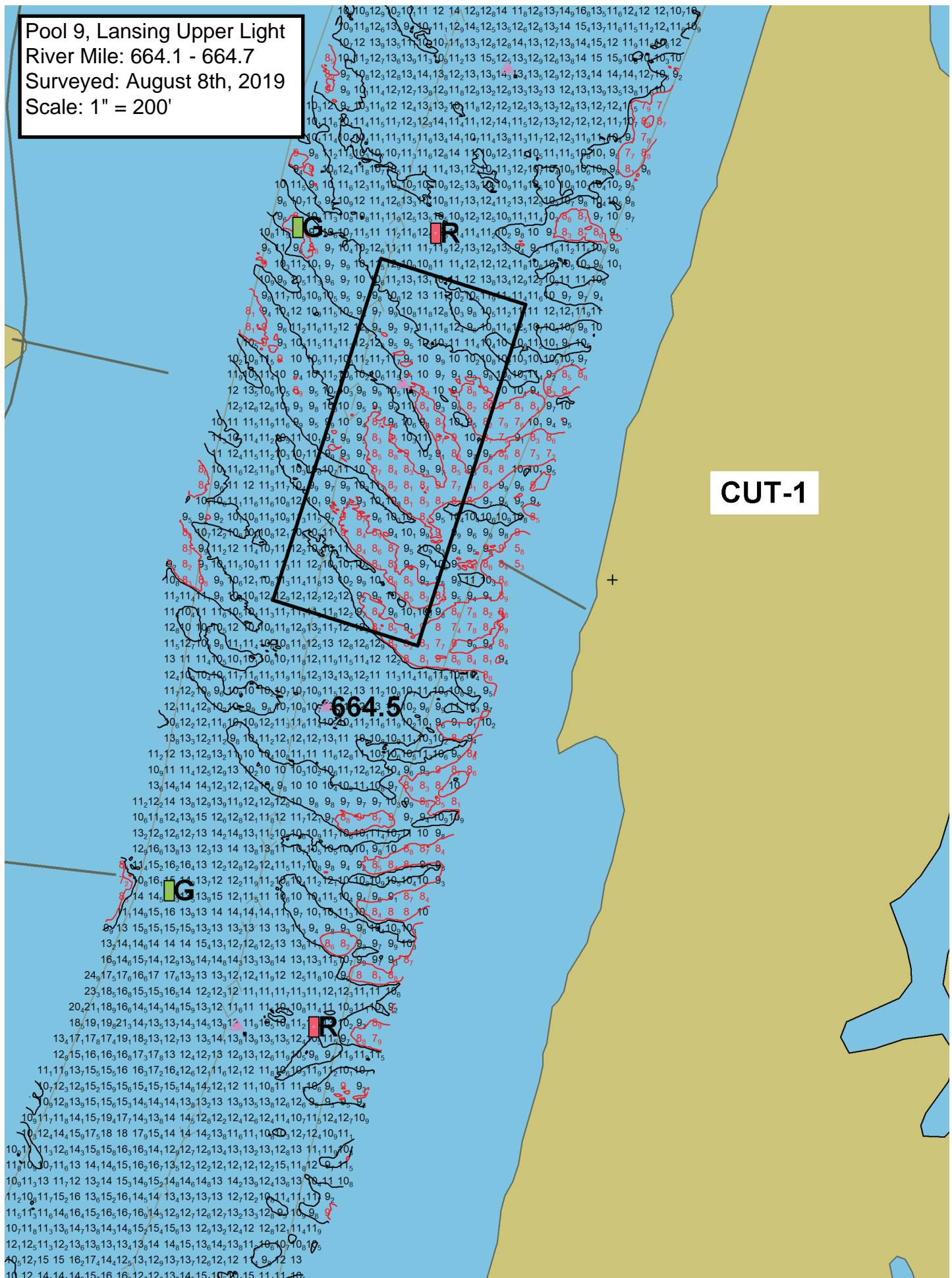
**MATERIAL PLACEMENT DATA**

Proposed Placement Site: Lansing Hwy Bridge  
Location: 9-663.5-LWP  
Site Characteristics: This is a historically used stock pile site, all material is expected to be removed.

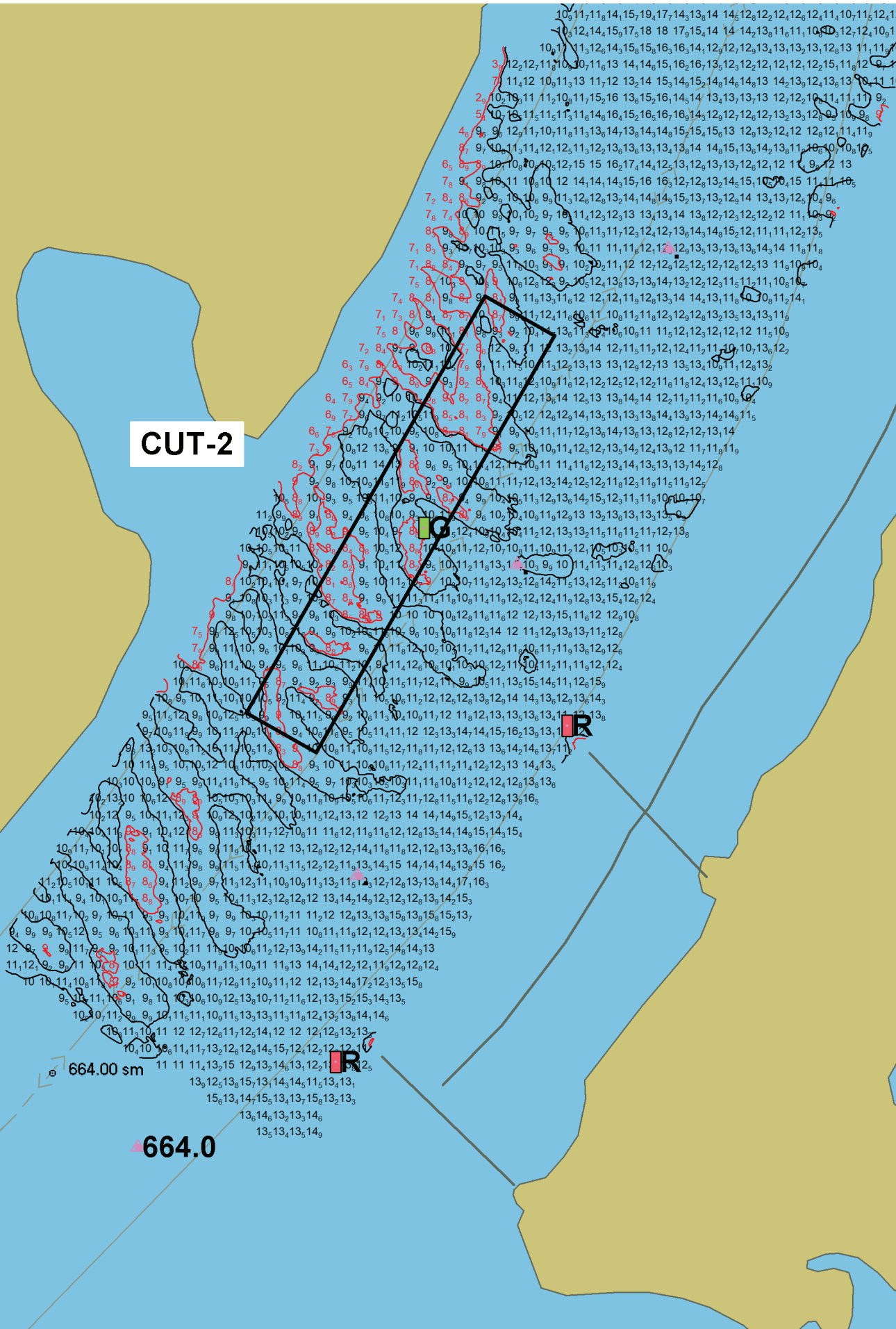
If you have any questions concerning this project, or if you would like to request an on-site meeting, please call me at (651) 290-5155.

Dan Cottrell  
Dredging Manager

Pool 9, Lansing Upper Light  
River Mile: 664.1 - 664.7  
Surveyed: August 8th, 2019  
Scale: 1" = 200'



CUT-2



664.00 sm

664.0